

A vintage travel poster illustration. On the left, a large, dark silhouette of a person in a hat and coat stands with their back to the viewer, looking out over a landscape. The landscape features rolling hills or mountains in the distance and a blue body of water in the foreground. In the lower right, a yellow classical building with columns is visible. The overall style is that of early 20th-century travel posters.

Sotheran's

EST. LONDON 1761

VINTAGE TRAVEL POSTERS 2020

Vintage Travel Posters 2020

Sothoran's are very pleased to bring you the fourteenth Annual Vintage Travel Posters exhibition.

The catalogue begins with two wonderful posters advertising Concorde (items 1-2). For those lucky enough to have travelled on this plane they should bring back fond memories. I used to love hearing it roar by in the skies above but never got to fly in it.

We have noticed that posters from Ireland have been particularly sought after recently. We have two to offer this year (items 11-12).

From Ireland to Norway we have some great Norwegian posters (items 13-15). My particular favourite of these is the never before seen by us "Winter Season in Oslo" by Bert Huszar. This poster shows the Palace of the Royal family in the shadows of snow capped mountains.

There are also some fantastic Italian posters (items 33-37). I like the one of Naples (item 33) showing a simmering Mount Vesuvius in the distance.

We have African posters (items 54-60). I love the one of the Giraffe by Ed Keeley (item 55) advertising Kenya and Uganda.

Perhaps the poster with the most historical interest is the Canadian one (item 70), enticing people to settle with the promise of free land!

We will sadly not be able to hold our Private evening view this year, however we would be delighted to see as many of you as possible come and view the exhibition which will be on display in the Print Department between 5th - 26th November 2020.

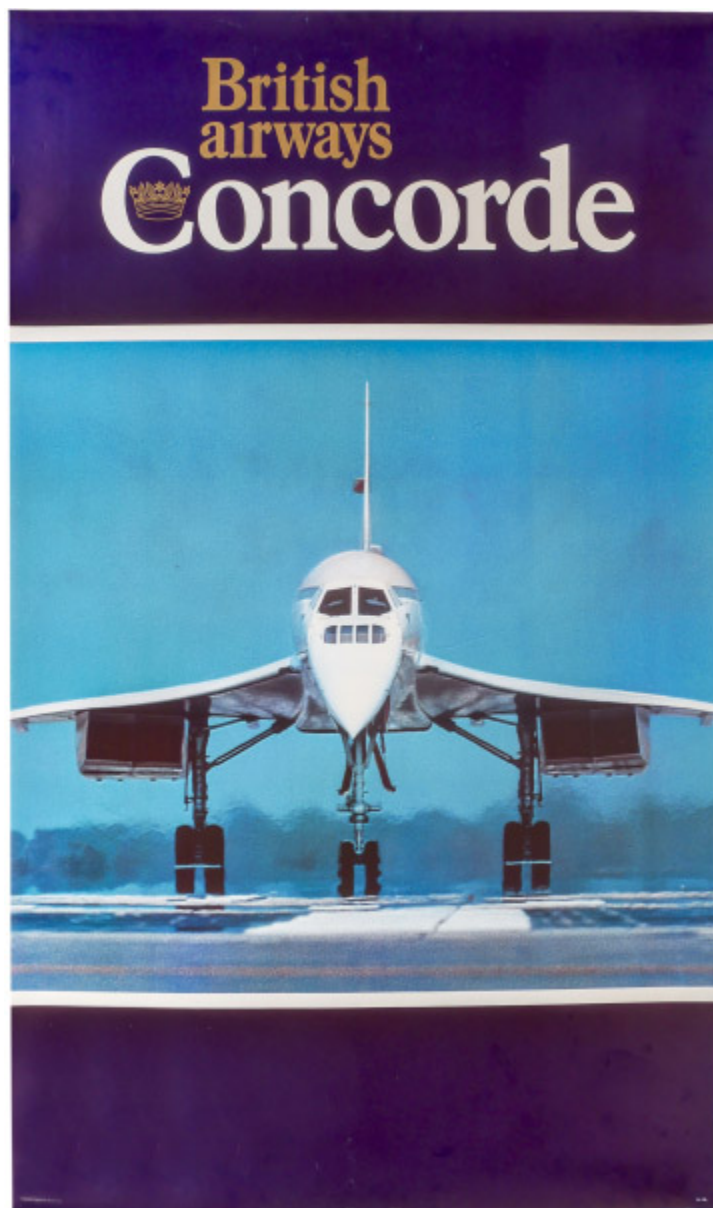
I do hope these posters bring you some cheer and continue to remind us all of the golden age of travel.



1. ANON. British Airways. Concorde. Original lithograph with colour as printed by IAL in England, 1976. 1015 x 635 mm.

There are some minor creases to edges.

£575



2. ANON. British Airways. Concorde. Original lithograph with colour, printed by Beric Press in England, c.1976. 1015 x 635 mm. £550



3. **STUDIO SEVEN.** Blackpool, for Sea Sands and Sunshine! Original lithograph with colour, linen backed, published by British Railways (London Midland Region), printed in Great Britain by R.B. Macmillan Ltd., Derby, 1954. 1015 x 635 mm. £800

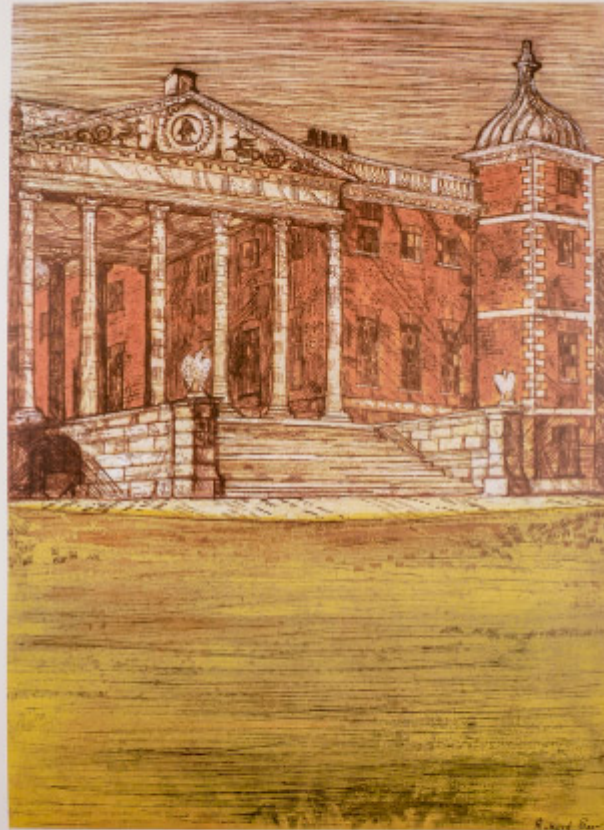


4. VICTORIA. Country Walks, Green Rover, Make the most of your Public Transport. Original lithograph with colour, linen backed, printed by Waterlow & Sons Ltd., London and Dunstable, c.1960. 1020 x 635 mm. £350



5. ANON. Strand, London underground. Original lithograph with colour, printed by Stanford's, London, 1936. 1000 x 630 mm.

Showing entrance to Underground station. Map is based upon ordnance survey with the sanction of the controller of H.M. Stationery Office. £950



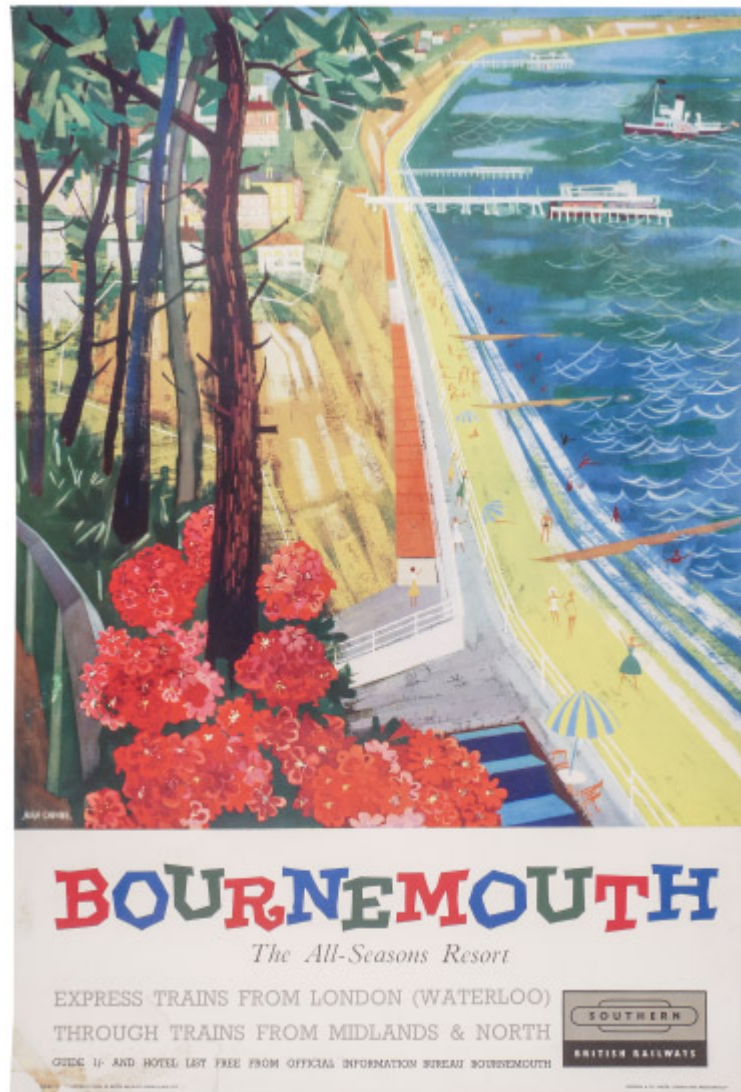
OSTERLEY PARK was originally built by Sir Thomas Gresham in the time of Elizabeth I. But in 1761 the then owner, Sir Francis Child, commissioned Robert Adam to convert and improve the mansion. The result is the magnificent Osterley Park of today, a classical monument, with every single detail, designed by the greatest single architectural genius of the British eighteenth century. Osterley is in the care of the National Trust, open to the public, and, by Piccadilly Line, only thirty minutes from central London.

Underground to Osterley.

Osterley Park is featured in the leaflet TOWN AND COUNTRY HOUSES, obtainable free from London Transport Travel Enquiry Offices, or from the Public Relations Office, 55 Broadway, S.W.1.



6. BEER, Richard. Osterley Park. Original lithograph with colour, linen backed, printed by Curwen Press, 1972. 1015 x 635 mm. £350



7. CHEVINS, Hugh Terry (1931-2003). Bournemouth, The All-Seasons Resort. Original lithograph with colour, linen backed, *printed by Jordison & Co. Limited, London and Middlesbrough, published by the Southern Region of British Railways, 1959. 940 x 630 mm.* £350

There has been some significant restoration to lower corners with some tape marks and loss of paper still visible.



8. MASON, Frank Henry (1875-1963). East Coast Craft, Visit Northumberland. Original lithograph with colour, linen backed, printed by Adams Bros & Shardlow, Ltd., printers, London & Leicester, published by the London & North Eastern Railway, c.1930. 1010 x 635 mm. £1,850

Poster No. 5 from a series of six produced for L.N.E.R.

"The Northumberland Coble Employed in the district from Hartlepool to Holy Island - difficult to handle but a wonderful sea boat".

Some tears and staining to top of poster which have been restored during linen backing.



9. SUDDABY, Rowland (1912-1972). You can be sure of Shell, Folly Houses, Darley Abbey. Original lithograph in colours, linen backed, printed by Waterlow & Sons Ltd., London, 1937. 760 x 1120 mm. £750



10. NIELSEN, Otto (1916-2000). by SAS Scotland - Bagpipes. Original lithograph with colour, printed by Axel Andreason & Sønner, 1950. 1000 x 620 mm. £675



11. TILL, Walter. Ierland, Glencarriff, Killarney. Great Southern RYS. Original lithograph with colour, c.1930. 755 x 1010 mm. £795



12. ANON. Bray for better Holidays, See Ireland first. Original lithograph with colour, printed by Hely's Limited, Colour Printers, Dublin, c.1930. 1020 x 640 mm.

Some slight wear to edges.

£1,150



13. HOLMBOE, Othar (1868-1928). Norway - the land of the midnight sun. Original lithograph with colour, printed by Aktietrykkeriet, Trondheim, 1905. 980 x 650 mm.

This is the first Norwegian travel poster. The poster was the result of a contest arranged by NSB - Norwegian State Railways, won by Othar Holmboe. The poster depicts a Norwegian Stavekirke in the midnight sun and a inset rail map with routes to Europe and beyond. The map shows cities like Constantinople, Petrograd and Christiania.

£1,350



14. HUSZAR, Bert (1878–1935). Winter Season in Oslo, Norway. Original lithograph with colour, backed on Japan paper, printed by Emil Moestue A/S, Oslo, 1935. 990 x 620 mm.

Some stains, foxing, tears and a missing corner.

£3,500



15. KRISTOFFERSEN, Kjell. Bergen, The doorway to Norway. Original lithograph with colour, published by NSB - Norway State Railways, printed by T.T.K. - John Grieg, Bergen, 1948. 1000 x 620 mm. £1,800



16. LUND, Aage (1892-1972). Norsk Lax (Norwegian Salmon). Original lithograph with colour, published by Oscar Fredericksen, Fiskehuset No 1, printed by A/S Kruckow-Waldorff Denmark, c.1910. 850 x 600 mm.

From the golden age before fish farming, when all the salmon you could buy was wild.

£1,050



17. LUND, Aage (1892-1972). Krabber. Original lithograph with colour, published by Oscar Fredericksen, Fiskehuset No 1, printed by A/S Kruckow-Waldorff Denmark, c.1920. 850 x 600 mm. £950



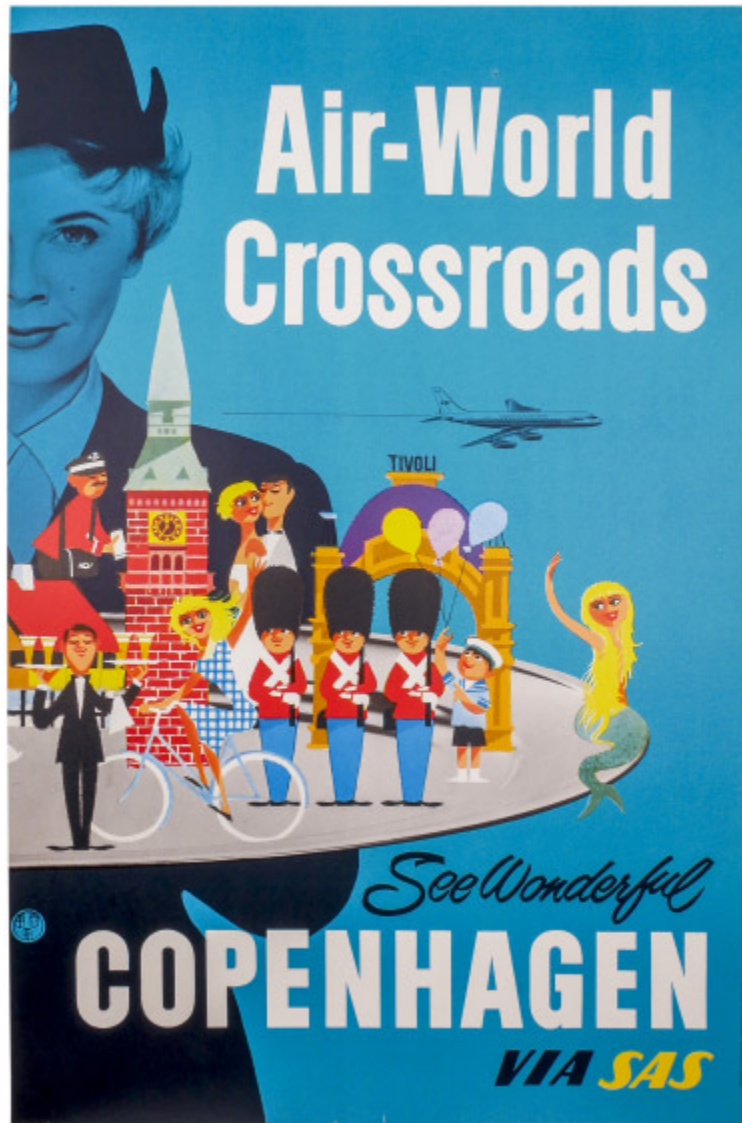
18. ANON. Flyv med SAS. Original lithograph with colour, printed by Egmont København, c.1950. 1000 x 620 mm.

The poster depicts a DC-6, "Cloudmaster" and four insets with photos showing the service onboard. Delicious meals are served when flying Scandinavian Airlines Systems Douglas DC-6's, a part of the Royal Viking deluxe air service. £650



19. GRANATH, Nils Gustaf (1896-1937). Sweden - Campa i Ulfsvik. Original lithograph with colour, printed by J. Olsens Litografiska Anstalt, STHLM, published by Ulfsvik Camping, c.1930. 900 x 600 mm.

£595



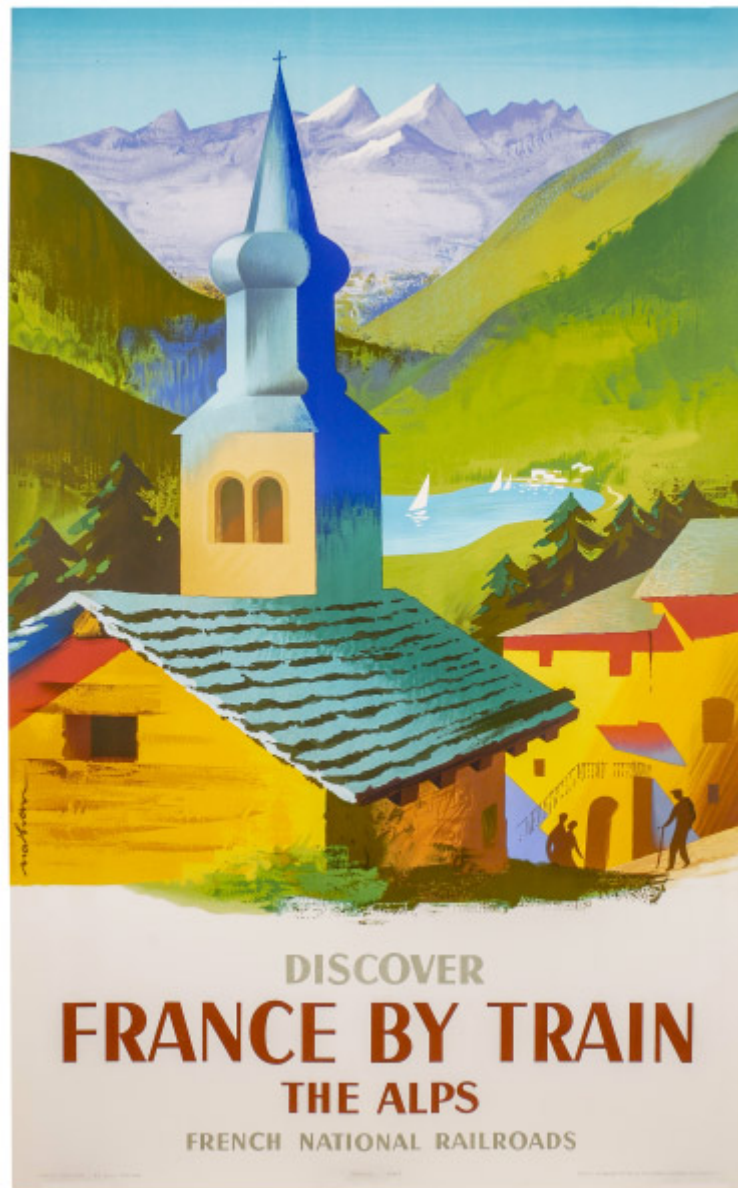
20. ANON. SAS Copenhagen Air-World Crossroads. Original lithograph with colour, linen backed, printed by Interprint A/S, published by SAS Scandinavian Airline System, 1956. 975 x 635 mm. £1,050



21. RASMUSSEN, Aage (1913-1975). DSB - Steam Locomotive. Original lithograph with colour, linen backed, printed by Andreasen & Lachmann, Köbenhavn, c.1950. 1000 x 620 mm. £795



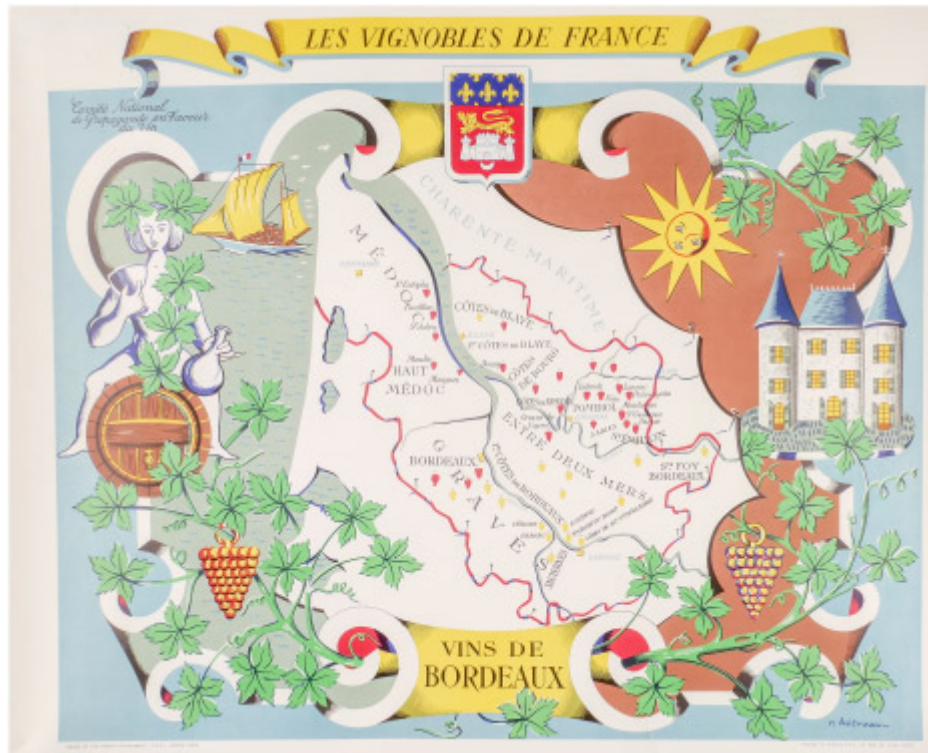
22. ANON. Royal Danish Ballet and Music Festival, 4th August - 3rd September 1967, Denmark. Original lithograph with colour as printed by Axel Andreasen & Sonner, 1967. 1000 x 620 mm. £75



23. GARAMOND, Jacques Nathan (1910-2001). Discover France by train. Original lithograph with colour, printed by Perceval, Paris, 1954. 1000 x 620 mm. £650



24. CHAMPSEUX, E Paul. Chemins de Fer d'Orléans et du Midi: Carcassonne. Original lithograph with colour, linen backed, printed by Lucien Serre, Paris, c.1930. 1000 x 650 mm. £1,100



25. HETREAU, R. Les Vignobles de France. Vins de Bordeaux. Original lithograph in colours, printed in France, 46 Rue de Lille Paris, issued by the French Government, c.1950. 675 x 845 mm.

Tear to lower centre which has been contained using conservation tape to the reverse.

£395



26. COLLIN, Edouard (1906-1983). Cie Gle Transatlantique French Line, "Liberté." Original lithograph with colour, linen backed, *published by editions "Transatlantique,"* printed in France, 1950. 990 x 610 mm. £950



27. HILDENBRAND. Château de Vitré. Original lithograph with colour, printed in France by The French Railway System (SNCF), 1931. 995 x 620 mm. £595



28. MAURUS, Edmond. Air France - Rayonne sur le Monde. Original lithograph with colour, printed by Goossens Publicité, 1947. 1000 x 620 mm. £2,250



29. MULLER, S. Le Mans - Vieille Ville d'Art. Original lithograph with colour, printed by A. Demoulin Paris, France, 1933. 1000 x 620 mm.

Since 1923, the city has hosted the internationally famous 24 Hours of Le Mans endurance sports car race.

£995



30. NOYER, Denis-Paul. La Closerie des Lilas. Original lithograph with colour, from the series, "Restaurants," signed and numbered 110/220 by the artist, printed in France, c.1979. 760 x 560 mm. £350



31. PEYNET, Raymond. (1908 - 1999). NOËL 77 Jouets, Fondation Louis Lépine. Original lithograph, linen backed, as printed by the Police Technical Services for the annual toy sale in the Préfecture de Police Paris, an event organised by Fondation Louis Lépine in 1977. 660 x 500 mm.

Established in 1950, the Fondation Louis Lépine, (FLL) is a charitable organisation that aims to support the lives of the servicemen and their families. It still is an operational organisation and aids the social engagement of the police force in Paris. This is a poster for an event, printed by police technical services for the annual toy sale, a community outreach event. The Raymond Peynet poster was distributed to public spaces in Paris.

£195



32. SOMMER, Philippe. Grand Vin de Bordeaux, Chateau Lafargue, Pessac-Leognan. Original lithograph with colour out of an edition limited to 550, with printers stamp, signed by the artist in silver pen lower right corner, printed on heavyweight paper in Paris, 1998. 1000 x 700 mm.

Sommer is a French artist who originally trained as an Architect before becoming one of the leading paper restorers in Paris. He has worked on the restoration of important posters by Toulouse-Lautrec amongst others.

£250



33. ANON. Napoli, Italy. Original lithograph with colour, printed by Richter & C. Napoli, c.1930. 995 x 610 mm. £2,500



34. **BARBI-BENVIGNATI.** Padova Padua - Italy. Original lithograph with colour, 1949. 990 x 620 mm. £495



35. LENHART, Franz (1898-1992). Merano, Italy. Original lithograph with colour, published by INIT - Italian State Tourist Department, printed by IND. GRAF. Succ. BESOZZI - Milano, 1934. 1000 x 620 mm. £1,250



36. NIELSEN, Otto (1916-2000). by SAS - Rome - Scandinavian Airline System. Original lithograph with colour, printed by Al-Offset, 1959. 1000 x 620 mm. £750



37. SLUIS, Piet (1929-). Aer Lingus - Vatican City Rome Italy. Original lithograph with colour, 1950.
1020 x 610 mm. £750



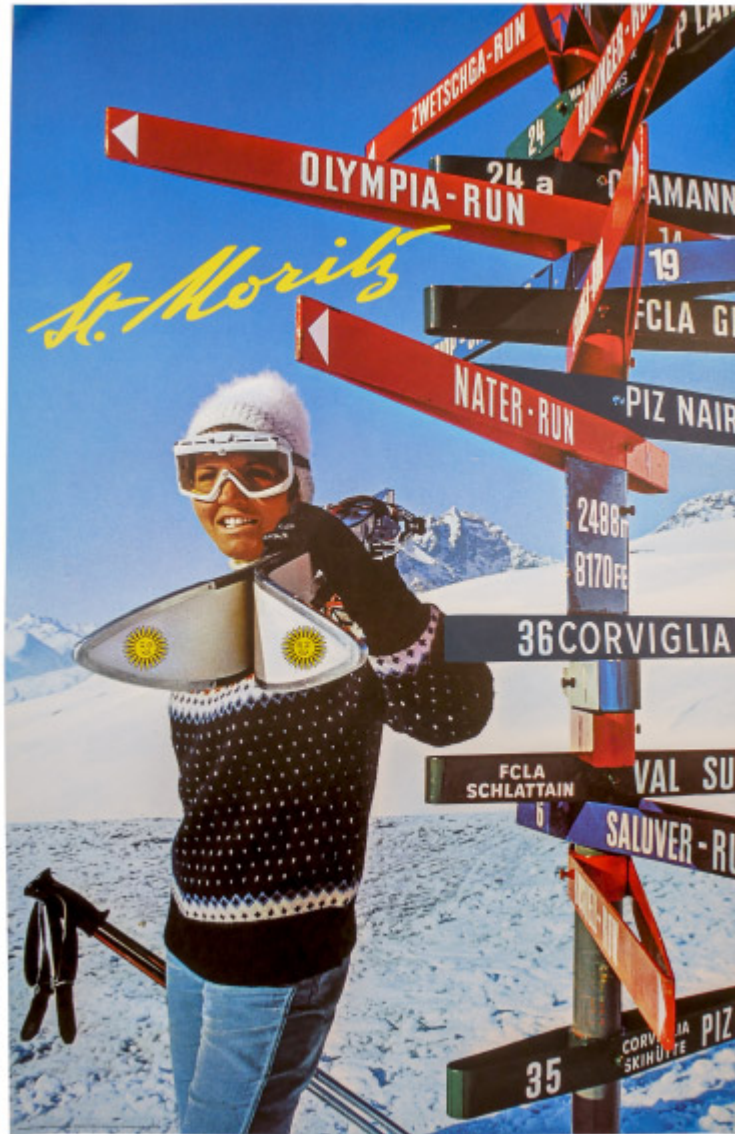
38. GROGNET, J. 38e Grand Prix Monaco 80 15/18 Mai. Lithograph after the original, reproduced by the Automobile Club de Monaco, printed in Paris, 1989. 1000 x 680 mm. £150



39. ANON. 40e Grand Prix Monaco 82, 20/23 Mai. Lithograph after the original, reproduced by the Automobile Club de Monaco, printed in Paris, 1991. 1000 x 680 mm. £150



40. ANON. Schweiz - Der Simplon. Original lithograph with colour, published by Schweizerische Bundesbahnen (SBB), printed by Ateliers artistiques A. Denéréaz-Spengler & Co, Lausanne, Switzerland, 1918. 1030 x 640 mm. £1,850



41. NATER, Hans. St. Moritz. Original lithograph with colour, linen backed, printed by Eidenbenz & Co. St. Gallen, Switzerland, 1970. 1020 x 645 mm. £1,200



42. NEGUS, Richard & SHARLAND, Philip. Suisse par Viscount, Aer Lingus, Irish Air Lines. Original lithograph with colour, printed in Ireland, published by Aer Lingus, c.1950. 1000 x 640 mm. £695



43. BURGER, Wilhelm Friedrich (1882-1964). Alpenposten, Zwitserland. Original lithograph with colour, printed by J. C. Müller, Zürich, 1937. 1000 x 620 mm.

Some repairs to corners and pinholes.

£1,250



44. **HOFMANN, Walter** (1906-1973). Kärnten Carinthia Austria. Original lithograph with colour, printed by Wagner'sche Univ.- Buchdruckerei Ges. M. B. H., Innsbruck, c.1950. 825 x 590 mm. £1,050



45. KLEIN, David (1918-2005). Germany Fly TWA Jets. Original lithograph with colour, linen backed, printed in U.S.A, c.1960. 1020 x 630 mm. £450



46. ANON. Predigtstuhlbahn Bad Reichenhall 1614m. Original lithograph with colour, c.1930. 600 x 400 mm. The Predigtstuhl Cable Car (Predigtstuhlbahn) has been in operation since 1928 and is the oldest, still running, original large-cabin cable car in the world. £350



47. DAVIE, James Alan (1920-2014). Olympische Spiele München 1972. [Munich Olympics] Original offset lithograph, printed by Edition Olympia, Munich, 1972. 1010 x 640 mm. £295



48. **GAEBELE, Albrecht.** München 1972 [1972 Munich Olympics Hurdles]. Original lithograph in colours, printed in Germany by Franzis-Druck, Munchen, 1972. 1180 x 840 mm.

There is a tear to top centre of poster which has been contained with tape to reverse.

£295



49. JONES, Allen. (b. 1937) Olympische Spiele München 1972. [Munich Olympics] Original offset lithograph, printed by Edition Olympia, Munich, 1972. 1010 x 640 mm. £350



50. MÜHLBERGER, Max. München 1972 [Gymnastics Munich Olympic Games]. Original lithograph in colours, printed by Gerber, München, Germany, 1972. 840 x 590 mm. £250



51. NIELSEN, Otto (1916-2000). by SAS - India. Original lithograph with colour, printed by Offset Axel Andreason & Søn, c.1950. 1000 x 620 mm.

Some light foxing to top.

£650



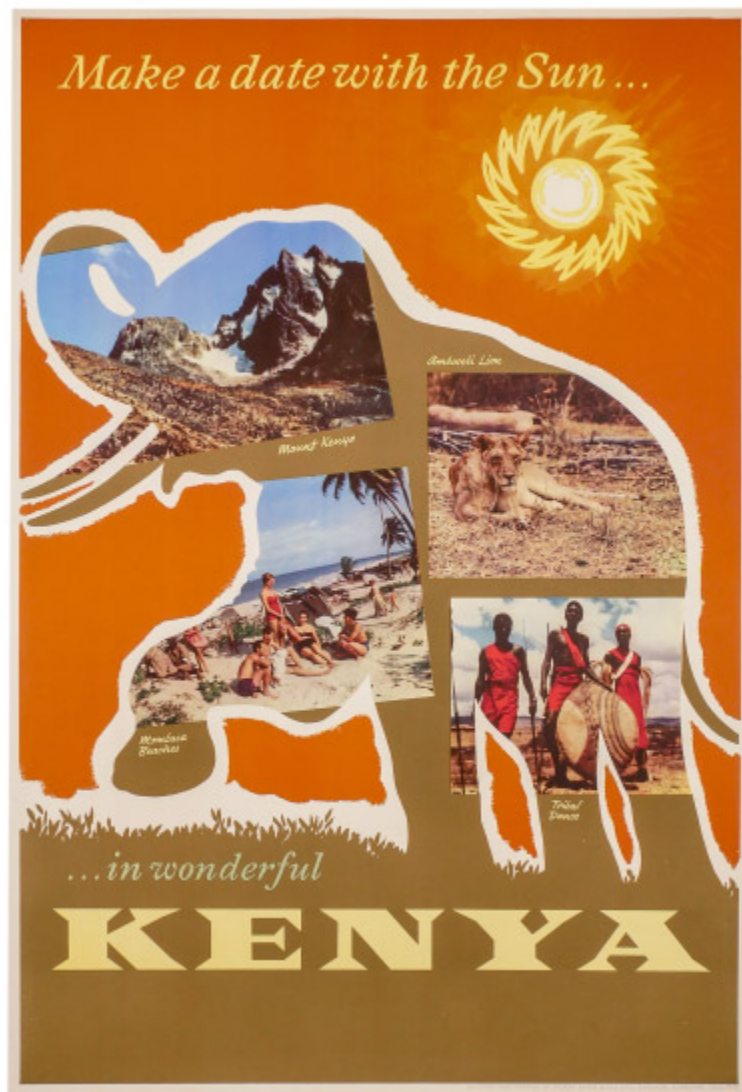
52. ANON. Visit India - Kashmir. Original lithograph with colour, printed by Survey of India offices, Dehra Dun, 1950. 1020 x 640 mm.

Some minor wear and foxing to upper left border.

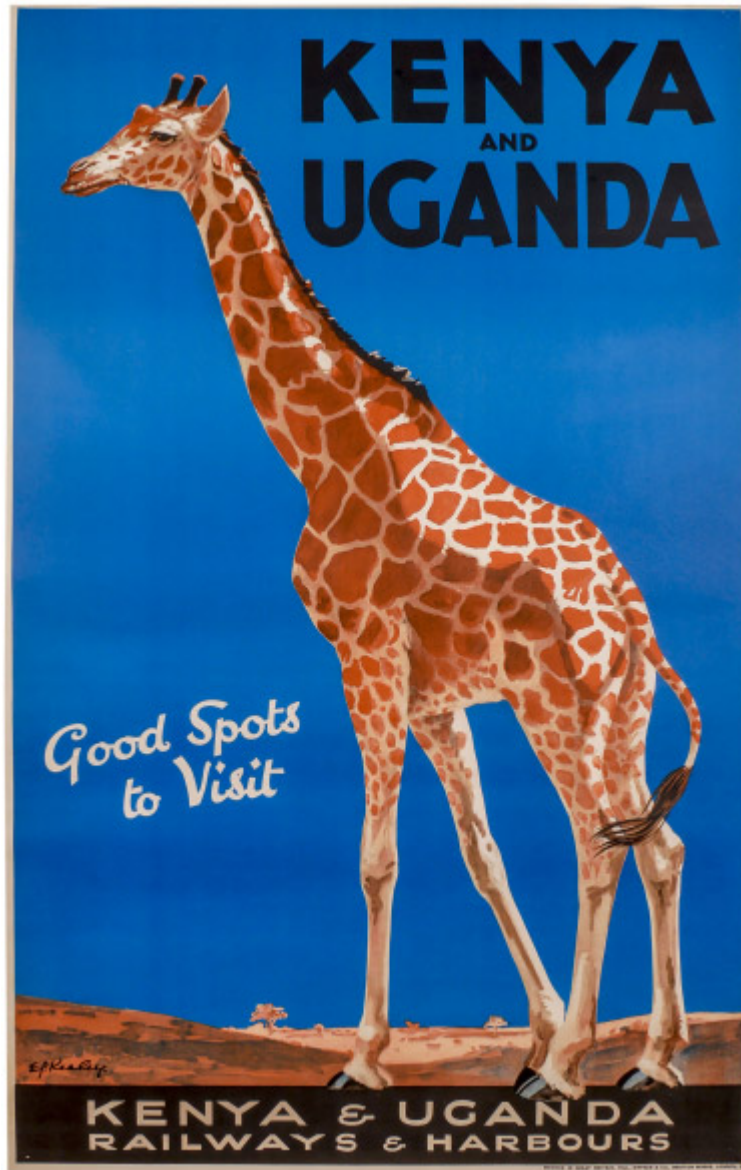
£1,450



53. [ANON] Banaras, India. Original lithograph with colour, linen backed, printed by M/S. Bolton Fine Art Litho Works, Bombay, published by the Government of India, for the Ministry of Transport, 1957. 1000 x 630 mm. £650



54. ANON. Kenya. Original lithograph with colour, linen backed, printed by Storey Evans & co Ltd, c.1950. 760 x 510 mm. £850



55. KEELEY, Ed. Kenya and Uganda - Railways and Harbours - Giraffe. Original lithograph with colour, printed by Hill, Biffken & Co., Grafton Works, London. N, 1930. 1030 x 650 mm. £3,250



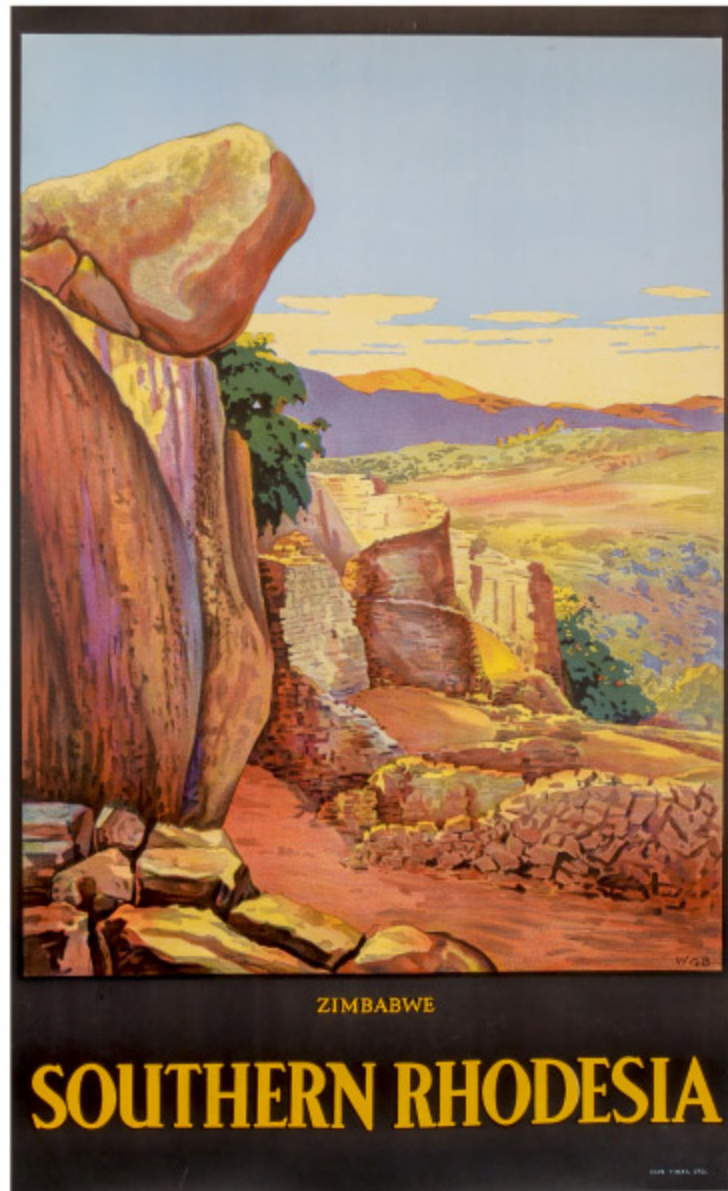
56. DESSIRIER, Jean (1944-). Air Afrique, Sahara. Original lithograph with colour, linen backed, published by Serma, Paris, printed in France, c.1960. 990 x 600 mm. £850



57. NIELSEN, Otto (1916-2000). Africa, Scandinavian Airlines System. Original lithograph with colour, printed in Denmark by Allier Press Ltd, c.1960. 1000 x 620 mm. £750



58. NIELSON, Otto (1916-2000). Africa, SAS. Original lithograph with colour, printed by Al-offset, Axel Andreasen & Sonner, Copenhagen, c.1960. 1000 x 620 mm. £850



59. W.G.B. Zimbabwe Southern Rhodesia. Original lithograph with colour, linen backed, printed by Cape Times Ltd, c.1930. 1010 x 620 mm.

Some minor repairs contained during linen backing.

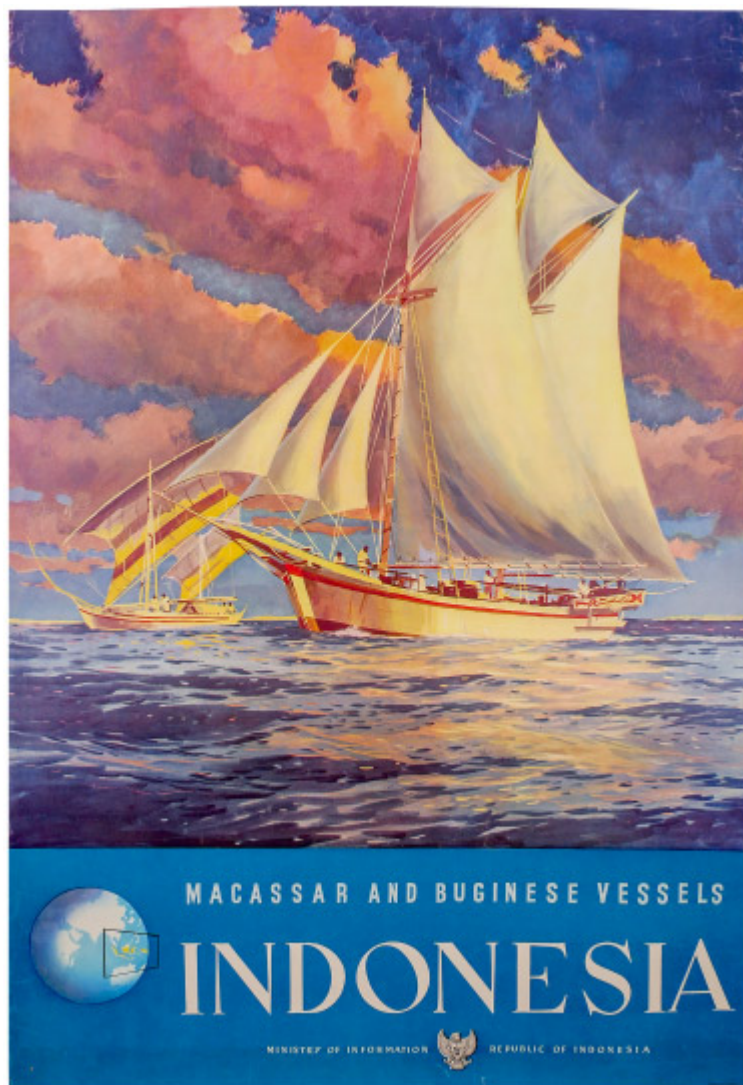
£2,950



60. ANON. Union Castle Line, It's fun in South Africa. Original lithograph with colour, c.1950. 1020 x 640 mm.

The Union-Castle Line was a British shipping line that operated a fleet of passenger liners and cargo ships between Europe and Africa from 1900 to 1977. It was formed from the merger of the Union Line and Castle Shipping Line.

£850



61. ANON. Indonesia Macassar and Buginese Vessels. Original lithograph with colour, 1950. 1000 x 680 mm. £1,250



62. ANON. Ski in Chile, Braniff International. Original lithograph with colour, linen backed, c.1970.
915 x 710 mm.

Some wear to edges.

£750



63. ANON. Islands in the Sun, Fly B.O.A.C. Original lithograph with colour, linen backed, printed in U.S.A, published by the British Overseas Airways Corporation, c.1960. 700 x 300 mm. £495



64. GAYNOR. U.S. Virgin Islands, Via Caribair. Original lithograph with colour, c.1960. 750 x 500 mm.
St. Croix, St. John, St. Thomas US Virgin Islands. £175



65. KLEIN, David (1918-2005). Grace Line, Caribbean South America Cruises. Original lithograph with colour, linen backed, printed in U.S.A, 1962. 1070 x 710 mm. £850



66. FLAGUAIS, J. De. TCA - Nassau. Original lithograph with colour, 1954. 740 x 490 mm.

Some minor creasing.

£1,250



67. GALLI, Stan. Hawaii Wahine Hula Girl - United Air Lines. Original lithograph with colour, published by United Air Lines, printed in U.S.A, c.1960. 1010 X 630 mm.

There is a stain to lower right centre.

£595



68. KLEIN, David (1918-2005). Los Angeles, Fly TWA Jets. Original lithograph with colour, linen backed, c.1960. 1015 x 640 mm. £925



69. NICOLL, Gordon (1888-1959). Cabin to Canada by White Star - SS Laurentic. Original lithograph with colour, linen backed, published by White Star, printed in U.K, c.1930. 1000 x 630 mm.

Gordon Nicoll (1888-1959) was a painter, born in London. He studied initially in Southampton, then at Hornsey School of Art

£1,750



70. MORGAN, Hawley. Canada - My Land! Original lithograph with colour, linen backed, 1922. 1150 x 760 mm.

The same image is found on a 1922 pamphlet published by the Canadian Government to promote the provinces of Alberta, Saskatchewan and Manitoba to prospective immigrants and settlers. The cover features a man with his arms raised in the air, looking at a farm settlement.

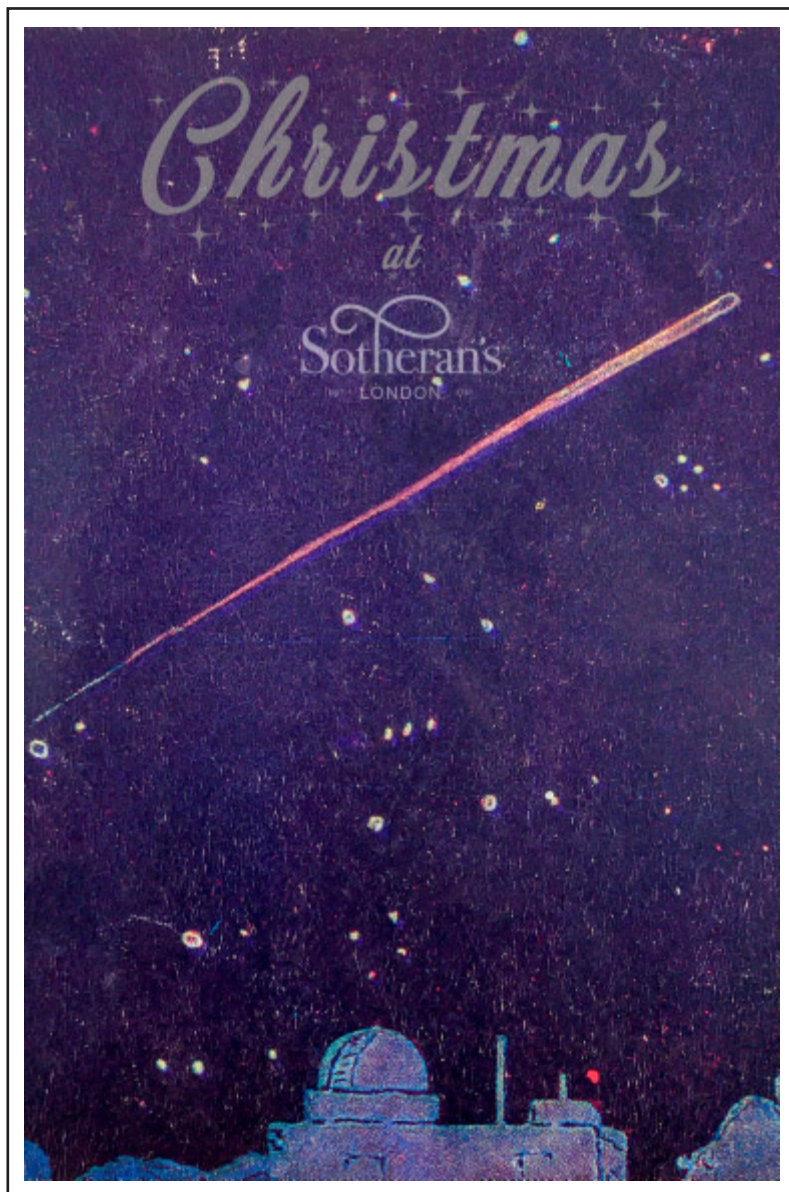
Light wear to edges.

£2,950



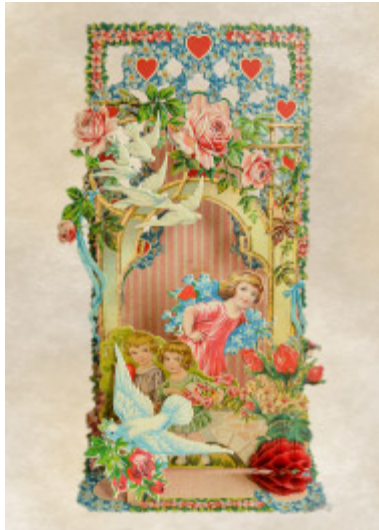
71. ANON. Davis Cup '83. Original lithograph with colour, published by Societe nouvelle de l'I.M.L. Paris, 1983. 930 x 630 mm.

Australia defeated Sweden in the final, held at the Kooyong Stadium in Melbourne, Australia, on 26-28th December, to win their 25th title overall. £495

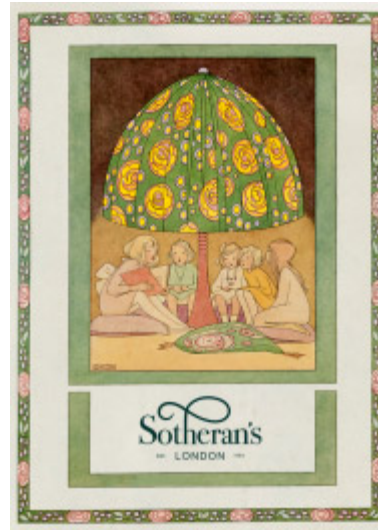


Christmas at Sotheran's. Christmas at Sotheran's is always very jolly and it's just around the corner. Our catalogue, filled with gift ideas for all tastes and every pocket, is on its way, so make sure you don't miss out - get in touch soon to register for a printed or digital copy.

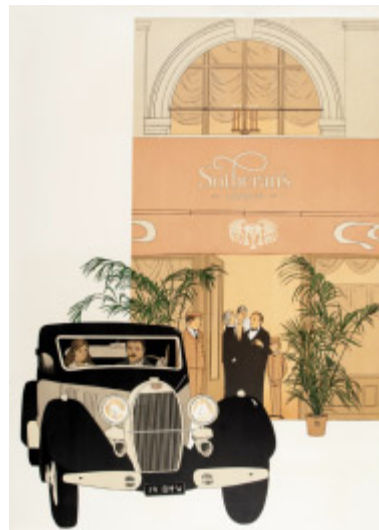
To request your copy, please email us at books@sotherans.co.uk



A Collection of Early Valentines



Summer Miscellany



Piccadilly Notes 2020



Turkey and the Ottoman World

Sotheran's Catalogues. Sotheran's produces several catalogues a year, both general miscellanies and specialist collections, distributed digitally and in print. Each one is guaranteed to carry first and rare editions, association copies, finely printed work and scarce curiosities in great condition

To view online or download your copy, please visit sotherans.co.uk/pages/catalogues

*The Directors of Henry Sotheran Ltd.
request the pleasure of your company
at an exhibition of*

VINTAGE TRAVEL POSTERS

from
5th- 26th November 2020

at
Henry Sotheran's Print Department
2 Sackville Street, London, W1S 3DP

*Contact : Richard Shepherd
telephone : 020 7439 6151
email : richard@sotherans.co.uk*

The logo for Sotheran's features a large, elegant, stylized 'S' that loops around the word 'Sotheran's' in a serif font. Below the main text, the words 'EST. LONDON 1761' are printed in a smaller, all-caps, sans-serif font.
Sotheran's
EST. LONDON 1761