

VINTAGE TRAVEL POSTERS 2023

Sotheran's
EST. LONDON 1761



HENRY SOTHERAN LTD
2 Sackville Street
Piccadilly
London W1S 3DP
tel: 020 7439 6151
email: prints@sotherans.co.uk
web: sotherans.co.uk



Vintage Travel Posters 2023

Sotheran's are delighted to present you with our Seventeenth Annual Travel Posters exhibition catalogue.

Once again we have some real treasures available. There is a wonderful poster by James Humbert Craig which we have had a version of before and are very pleased to have found another example (item 3). It shows an image of people gathering flax for making linen. A perfect glimpse into a largely lost, once thriving industry in Ireland.

There is also a lovely ski poster for PLM by Jean-Roaul Naurac of a ski jumper from the 1930's. An intriguing thing about this poster is that it was produced without text.

As well as the Craig poster (item 3) we also have other posters by Frank Newbould (item 57) & Edgar Ainsworth (item 58) produced for The Empire Marketing Board. These posters were produced to advertise the products of the British Empire.

We are also very pleased to be able to offer a selection of our rarest Luggage labels at the end of the catalogue. These have been acquired from the same supplier as last year. My personal favourite of these is the one of Golf at the Hotel D'Angleterre et de La Grande Bretagne (item 63) from c.1923. 100 years on it still looks as vibrant as the day it was made.

Luggage labels were often designed by some of the finest artists available at the time and the selection offered here in the catalogue can be considered amongst the most impressive ever produced.

The Directors of Henry Sotheran Ltd. request the pleasure of your company for a private view of

Vintage Travel Posters

on

Thursday 9th November 2023

6:00 - 8:00pm

at

Henry Sotheran's Print Department

2 Sackville Street, London, W1S 3DP

Exhibition: 10th November - 1st December 2023

RSVP : Richard Shepherd

telephone : 020 7439 6151

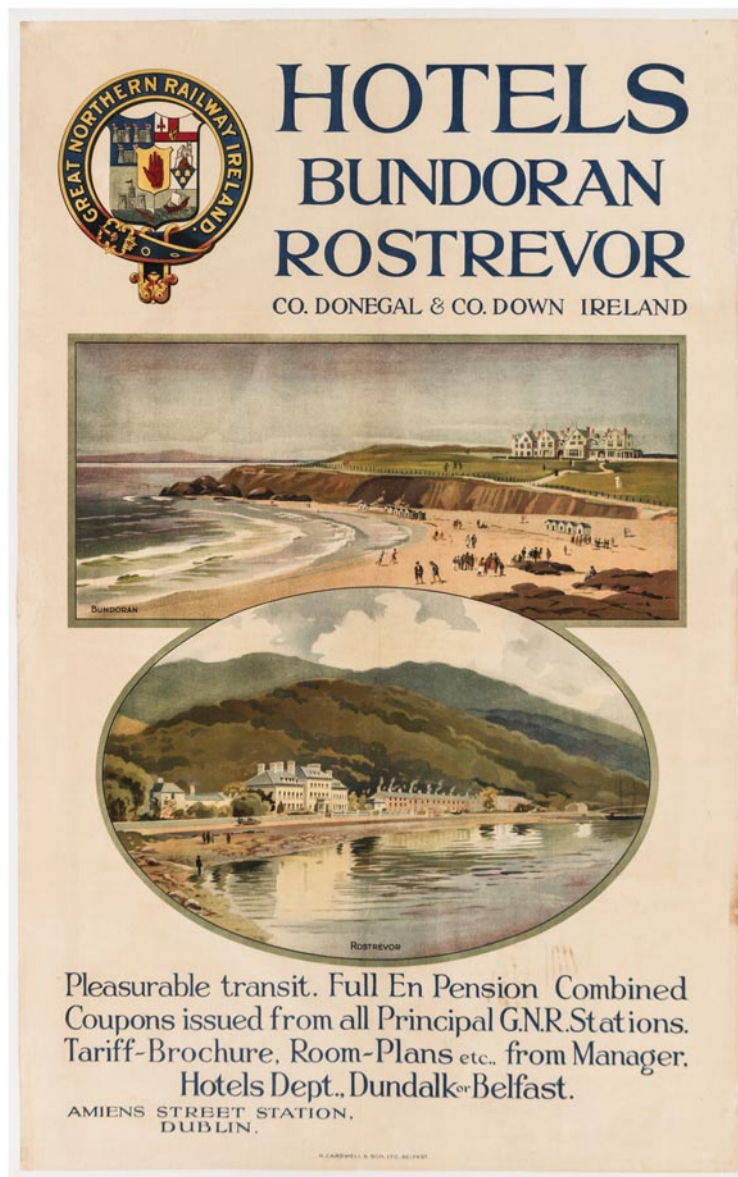
email : richard@sotherans.co.uk



1. KIRKE, Eve (1900-1969). You can be sure of Shell, Strand on the Green, Chiswick. Original lithograph with colour, linen backed, poster No. 319, printed by Vincent Brooks, Day & Son Ltd, lith, London, 1932. 760 x 1145 mm.

Some tears & pin holes which have been contained during linen backing.

£1,600



2. ANON. Hotels Bundoran, Rostrevor, County Donegal & County Down, Ireland. Original lithograph with colour, linen backed, printed by R. Carswell & Son, Ltd., Belfast, published for Great Northern Railways, Ireland, c.1905. 1010 x 635 mm.

The Great Northern Hotel in Bundoran and Golf course were founded in 1894. The Golf course is one of the oldest in Ireland.

The Great Northern Railway Company bought The Mourne Hotel in Rostrevor (opened 1876) and renamed it the Great Northern Railway Hotel.

Some minor staining & restoration.

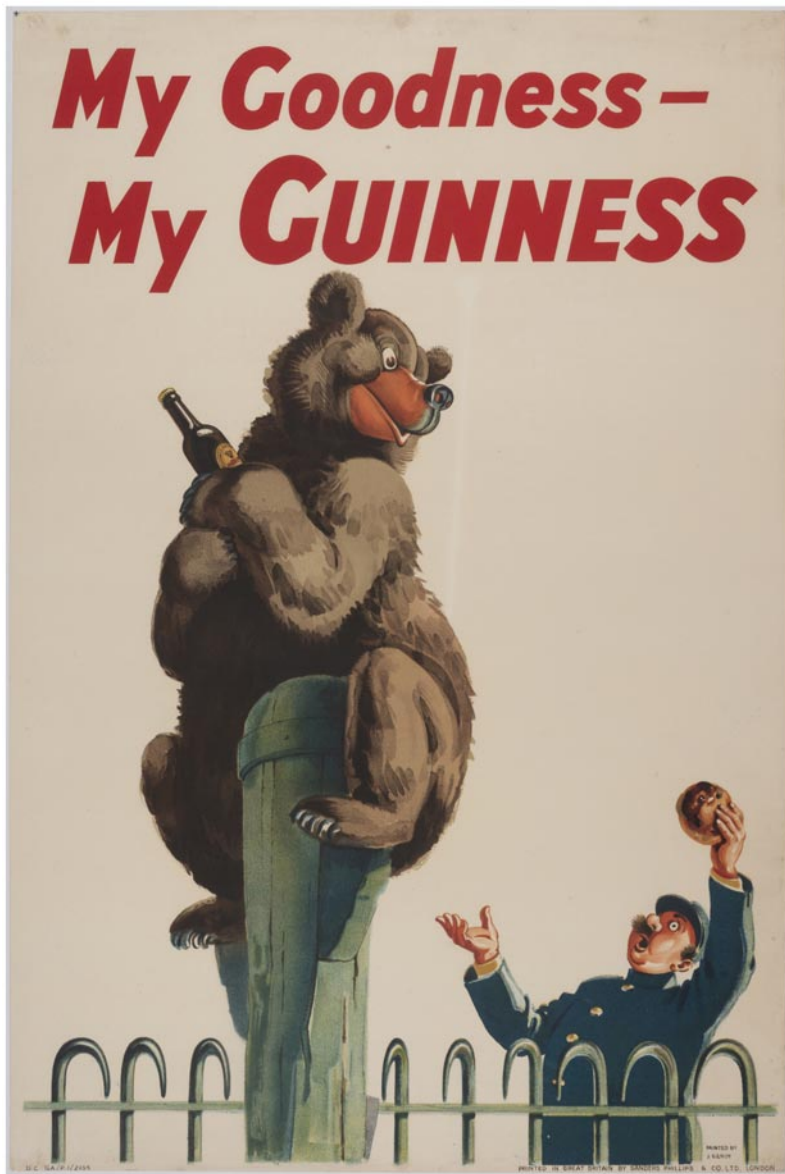
£2,250



3. CRAIG, James Humbert (1877-1944). Northern Ireland, Flax Growing. Original lithograph, with colour, linen backed, published by the Empire Marketing Board, printed for H.M. Stationery Office by Waterlow and Sons Ltd., London, Dunstable and Watford, 1927. 505 x 760 mm.

Craig was born in Belfast to Alexander Craig, a tea merchant, and a Swiss mother, Marie Metzenen, from a family with a painting tradition. Among his favourite panoramas were Donegal, Connemara and the Glens of Antrim. Craig was elected to the Royal Ulster Academy and the Royal Hibernian Academy in 1928. He also exhibited at the Fine Art Society in London.

Linen is cloth woven from, or yarn spun from the flax fibre, which was grown in Ireland for many years before advanced agricultural methods and a more suitable climate led to the concentration of quality flax cultivation in northern Europe. £2,150



4. GILROY, John Thomas Young (1898-1985). *My Goodness - My Guinness*. Original lithograph with colour, linen backed, printed by Sanders Phillips & Co., Ltd - London, 1953. 750 x 505 mm. £1,550



5. GRANATH, Nils Gustaf (1896-1937). Sweden - Campa i Ulfsvik. Original lithograph with colour, printed by J. Olsens Litografiska Anstalt, STHLM, published by Ulfsvik Camping, c.1930. 900 x 600 mm. £595



6. LAGERSON, Rolf H (1925-2006). Swedish Lloyd - SAS. Original lithograph with colour, printed by J. Olsen, Stockholm, published by SAS & Svenska Lloyd, 1955. 1000 x 620 mm.

Lageron is a well know Swedish designer from the 50s and 60s. He was born in Sweden, but came to Denmark in the 1960s, becoming the design manager for Lego. £795



7. BECKMAN, Anders (1907-1967). ABA Aerotransport. Original lithograph with colour, linen backed, printed by Esselte, Stockholm, published by AB Aerotransport, 1943. 1000 x 620 mm.

Restoration of large areas of water damage. Contained during linen backing.

£1,250



8. NIELSEN, Otto (1916-2000). by SAS. Original lithograph with colour, linen backed, printed by the Aller Press Ltd, Denmark, published by SAS Scandinavian Airlines System, 1946. 1000 x 620 mm.

The poster depicts passengers in fashionable clothing leaving the Douglas DC-4 Skymaster and aircraft passing the tail. Douglas DC-4 Skymaster was used on the routes to New York and Rio de Janeiro.
£1,600



9. LUND, Aage (1892-1972). Oysters Østers Oscar Fredericksen Fiskehuset No 1. Original lithograph with colour, published by Oscar Fredericksen Fiskehuset No 1, printed by Sophus Kruckows Trykkerier, c.1910. 850 x 590 mm.

Founded in 1870 by fishmonger Oscar Fredericksen, Fiskehuset No. 1 holds the distinction of being the first fish wholesaler on the famous “Gamle Strand” street. Above the fishmonger, Fiskehusets Restaurant became synonymous with elegance and sophistication, earning a reputation as Copenhagen’s premier fish restaurant.

£1,650



10. ANON. Danmark - Royal Danish Ballet and Music Festival, 4th August - 3rd September 1967, Denmark

Original lithograph with colour as printed by Axel Andreasen & Sonner, 1967. 1000 x 620 mm.

£75



11. RASMUSSEN, Aage (1913-1975). Jens Olsens Verdensur Københavns Rådhus. Original lithograph with colour, printed by Andreassen og Lachmann, København, 1957. 1000 x 620 mm.

The poster depicts Jens Olsen's World Clock, a magnificent astronomical clock located in Copenhagen, Denmark. £550



12. **SPLIID, Hakon** (1893-1959). Rosenborg Castle Denmark. Original lithograph with colour, linen backed, printed by P. Christiansen Papirvarfabrik - Copenhagen, 1946. 1000 x 620 mm.

Rosenborg Castle is a renaissance castle located in Copenhagen, Denmark. Originally built as a country summerhouse in 1606, the castle is an example of Christian IV's many architectural projects. It is a magnificent structure that boasts a rich history and is a popular destination for tourists. **£795**



13. ANON. SNCF - Je Prefere le Train. Original lithograph with colour, linen backed, printed by Lalande & Courbet Wissous, 1975. 990 x 615 mm. £265



14. **BOISSROND, F.** Willi's Wine Bar, 13 rue des Petits Champs Paris. Original lithograph with colour, printed by WM. Editions, 1985. 1000 x 685 mm.

Poster as issued without text for Willi's Wine bar.

£495



15. CASSANDRE, A. Mouron. L.M.S. Best Way. Lithograph after the original from 1928, printed by Henri Mouron Adagp, Paris, WM editions, France, 1985, 925 x 115 mm.

Cassandre, pseudonym of Adolphe Jean-Marie Mouron (24 January 1901 - 17 June 1968) was a French painter, commercial poster artist, and typeface designer.

Cassandre became successful enough that with the help of partners he was able to set up his own advertising agency called Alliance Graphique, serving a wide variety of clients during the 1930s. He is perhaps best known for his posters advertising travel, for clients such as the Compagnie Internationale des Wagons-Lits. He was a pioneer on airbrush arts.

£495



16. **BERÉNY, Robert (1887-1953).** Modiano. Modern printing after the original, printed in France on very high quality Hahnemühle 100% cotton paper. Superior quality ink as used on lithographic press, 2022. 1000 x 700 mm.

Róbert Berény (18th March 1887 - 10th September 1953) was a Hungarian painter, one of the avant-garde group known as The Eight who introduced cubism and expressionism to Hungarian art in the early twentieth century before the First World War. He had studied and exhibited in Paris as a young man and was also considered one of the Hungarian Fauves.

£275



17. CASSANDRE, A. Mouron (1901-1968). Normandie, French Line. Havre - Southampton - New York. Modern printing after the original, printed in France on very high quality Hahnemuhle 100% cotton paper. Superior quality ink as used on lithographic press, 2022. 1000 x 700 mm. £275



18. CASSANDRE, A. Mouron (1901-1968). Par Le Paquebot "L'Atlantique." Modern printing after the original, printed in France on very high quality Hahnemuhle 100% cotton paper. Superior quality ink as used on lithographic press, 2022. 1000 x 700 mm. £275



19. DABO. La Ciotat - Plage. Lithograph after the original, printed in France, by CIWLT, 1989. 885 x 595 mm. £450



20. DALÍ, Salvador (1904-1989). Roussillon, Chemins de Fer Français. Original lithograph in colours, printed in France for the French National Railways (SNCF), 1970. 990 x 620 mm. £250



21. DALÍ, Salvador (1904-1989). Normandie, Chemins de Fer Français. Original lithograph in colours, printed in France for the French National Railways (SNCF), 1970. 990 x 620 mm. £250



22. DE TANGUY, Charles Morel (1857-1930). La Cote D'Azur. Original lithograph with colour, linen backed, published by Affiches photochrome, printed by A.D.I.A, Nice, c.1920. 1050 x 755 mm.

Some tears & staining to poster.

£950

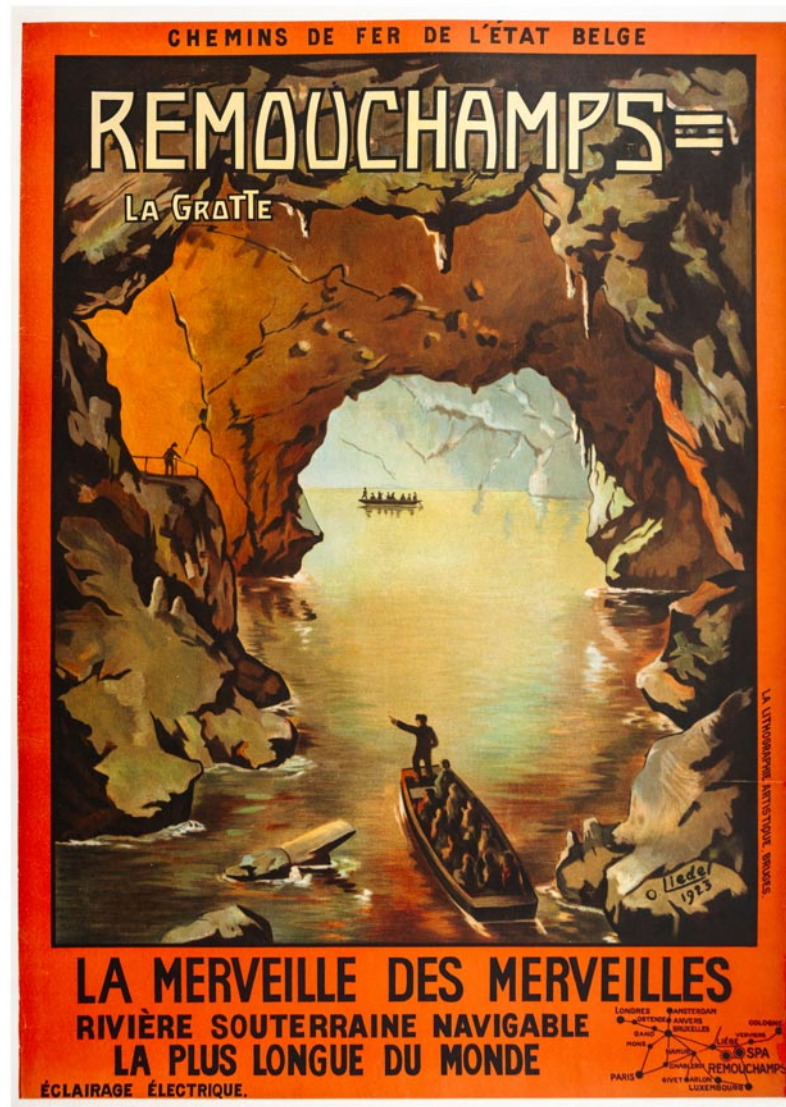


23. DON, Jean (1900-1985). Wagon Lits. Original lithograph with colour, linen backed, published by Compagnie Internationale des Wagons-Lits, printed by S.C.I.P. Paris, 1953. 990 x 640 mm.

Compagnie Internationale des Wagons-Lits is an international Hotel and travel logistics company, particularly known for its on-train catering and sleeping car services, as well as being the historical operator of the Orient Express. £950



24. F.B. Generation 80, Affiches D'Artistes. Original lithograph, published by w.m. Editions, Paris, 1988.
1010 x 700 mm. £350



25. LIEDEL, Oscar (1879-1957). Remouchamps, La Grotte. Original lithograph with colour, linen backed, printed by La Lithographie Artistique, Bruges, 1923. 1045 x 745 mm. £450



26. NAURAC, Jean-Roaul (1878-1932). PLM ski poster. Original lithograph with colour, linen backed, printed by de Vaugirard, Paris, published by Chemins de fer de Paris à Lyon et à la Méditerranée - PLM, c.1930. 995 x 620 mm.

This poster was printed in 1930 without text for later text overprints. You can find the same poster with the text: 'Savoy et Dauphine' and "Villard de Lans Sports d'Hiver".

£2,695



27. SENECHAL. Plombières Les Bains (Vosges). Original lithograph with colour, linen backed, printed in Reims for Societe Nationale des Chemins de fer Francais, 1939. 1000 x 620 mm. £750



28. **RICHARD, James C.** Menton - Pearl of France - French Riviera. Original lithograph with colour, linen backed, printed by Lucien Serre & Cie Paris, c.1930. 1000 x 660 mm.

Menton, nicknamed the Pearl of France, is located on the Mediterranean Sea at the Franco-Italian border, just across from the Ligurian town of Ventimiglia. Menton station has rail connections to Paris, Marseille, Cannes, Antibes, Nice and Ventimiglia.

£1,595



29. **BRODERS, Roger** (1883-1953). Charbonnières-Les-Bains. Original lithograph, with colour, linen backed, printed by Lucien Serre & Cie, Paris, c.1930. 1075 x 785 mm.

Charbonnières-les-Bains is a commune in the Metropolis of Lyon in Auvergne-Rhône-Alpes region in eastern France. It borders Parc de Lacroix-Laval in Marcy-l'Étoile.

Some minor loss of paper to top centre of margin.

£2,350



30. **BRODERS, Roger** (1883-1953). *Le Tour du Mont Blanc*. Lithograph after the original, printed in France, by CIWLT, 1989. 855 x 620 mm. £450



31. **BRODERS, Roger** (1883-1953). Monte Carlo. Lithograph after the original, printed in France, by CIWLT, 1989. 890 x 560 mm. £550



32. ANON. Principality of Monaco. Original lithograph with colour, printed in France, c.1960. 940 x 620 mm. £175



33. FALCUCCI. Monaco 19 Avril 1931. Lithograph after the original as reproduced by the Automobile Club de Monaco, printed in Paris, 1983. 1000 x 680 mm. £175



34. MINNE, B. Monaco 1er et 2 Juin 1952. Lithograph after the original as reproduced by the Automobile Club de Monaco, printed in Paris, 1991. 1000 x 680 mm. £175



35. CARPENTER, S. Monaco, 29e Grand Prix 22/23 Mai 1971. Original lithograph with colour, linen backed, printed by Edition J. Ramel, Nice, 1971. 645 x 445 mm.

This was the last race on the original Monaco circuit, as a dedicated pit lane was created along the harbor before Tabac in 1972.

Jackie Stewart claimed a stunning pole position over a second ahead of his front row companion Jacky Ickx and shot into an immediate lead from the fast-starting Jo Siffert, Ickx, Pedro Rodríguez, Ronnie Peterson and Denny Hulme. Chris Amon stalled on the grid and Graham Hill - seeking a 6th Monaco win - made a rare mistake, hitting the wall at Tabac on the 2nd lap.

Jackie Stewart emerged victorious.

£1,250



36. **BRODERS, Roger** (1883-1953). Rome, Par le Train de luxe "Rome Express." Original lithograph with colour, linen backed, printed by Cornille & Serre, Paris, 1921. 1060 x 760 mm.

Restored fold and some minor creasing contained during linen backing.

£3,950



37. MARANGOLO, Franz (1912-1995). Campari, Soda. Modern printing after the original, printed in France on very high quality Hahnemuhle 100% cotton paper. Superior quality ink as used on lithographic press, 2022. 700 x 500 mm. £150



38. LIEBEAUX, Michel (1881-1923). Turin-Sport, P. Taillan & Cie. Original lithograph with colour, linen backed, published by Wall, 14 Rue Lafayette, Paris, c.1920. 1600 x 1200 mm.

Michel Liebeaux, also known as Mich, was a poster artist active in the early twentieth century. This poster was probably created to coincide with the Summer Olympic Games held in Antwerp in 1920.

Turin Sport vermouth was an alcoholic drink produced in France.

£2,250



39. PUPPO, Mario (1905-1977). Italy - Napoli. Original lithograph with colour, linen backed, printed by Richter & C., Napoli, published by ENIT - Ente Provinciale per il Turismo Napoli, 1955. 1010 x 640 mm. £1,150



40. **RETROSI**, Virgillio (1892-1975). Roma Rome Italy. Original lithograph with colour, linen backed, printed by Novissima, published by ENIT (Ente Nazionale Italiano per il Turismo), c.1930. 1005 x 620 mm. £1,950



41. AIGNER, Paul (1909-1984). Winter Sports in Austria. Original lithograph with colour, linen backed, printed by Brüder Rosenbaum, Vienna, c.1950. 950 x 630 mm. £1,650



42. GARAMOND, Jacques Nathan (1910-2001). Bezoekt de Alpen [Visit the Alps]. Original lithograph with colour, printed in France for and by the French Railways, 1954. 1000 x 615 mm. £450



43. ANON. Rigi-Bahn Luzern - Vitznau - Rigi - Kulm. Original lithograph with colour, printed in c.1910. 990 x 700 mm.

Looking down towards Lake Lucerne.

Mint condition.

£1,750



44. PELLEGRINI, Carlo Giovanni Battista (1866-1937). Adelboden 1400m - Berner-Oberland. Original lithograph with colour, linen backed, printed by A.Trüb & Cie., Aarau, published by SBB - Schweizerische Bundesbahnen, 1907. 1120 x 740 mm.

Some creasing to edges, small tears and discolourisation.

£3,250



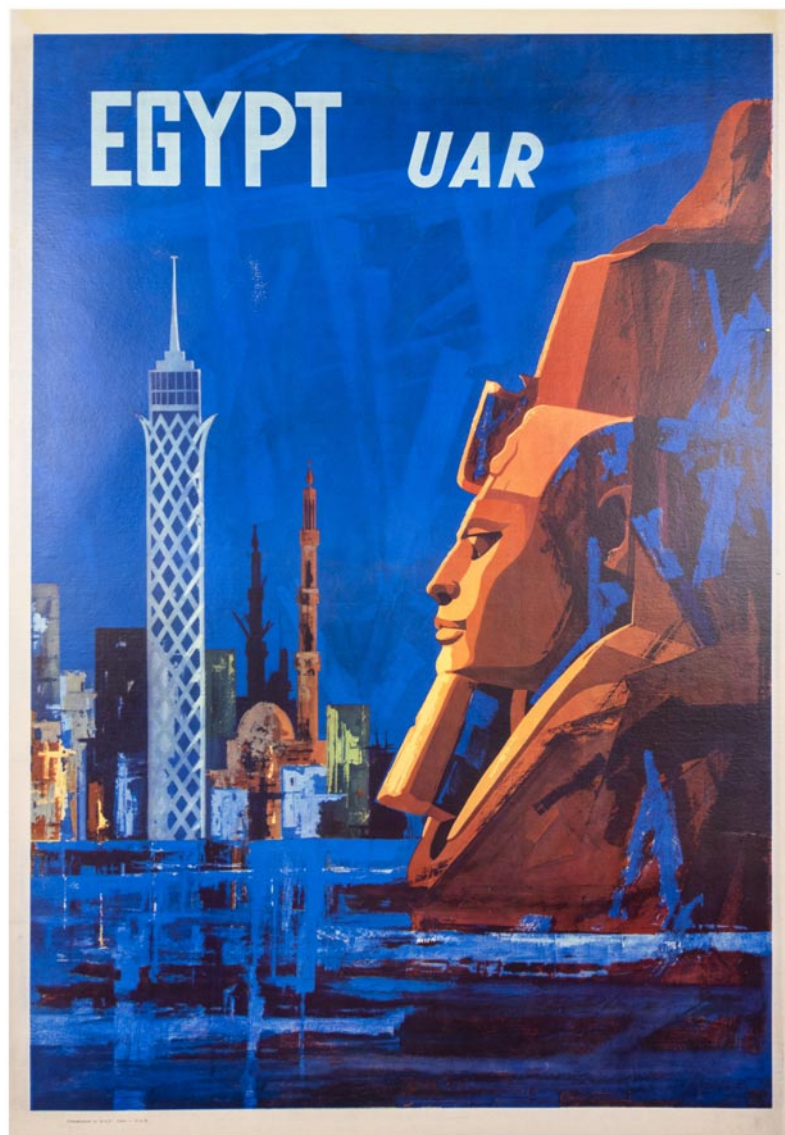
45. MONORY. Madrid 1982, Copa del Mundo de Futbol, Espana 82. Original lithograph with colour printed by Societe de production des affiches Maeght, Paris, 1982. 950 x 600 mm. £250



46. RUTT, Bernard. NAAR Gibraltar, Algiers, Palma, Villefranche (Nice) & Genua Stoomvaart MY., Nederland. Original lithograph with colour, linen backed, printed by Ronald Massey, Ltd., London, c.1950. 1015 x 635 mm.

With two Belgium postal stamps in top right corner.

£1,250



47. ANON. Egypt UAR. Original lithograph, with colour, linen backed, printed by A.O.P Cairo, 1958.
1000 x 695 mm. £1,750



48. ANON. Jet to East Africa - East African Airways. Original lithograph with colour, published by East African Airways, printed in c.1960. 740 x 505 mm. £525

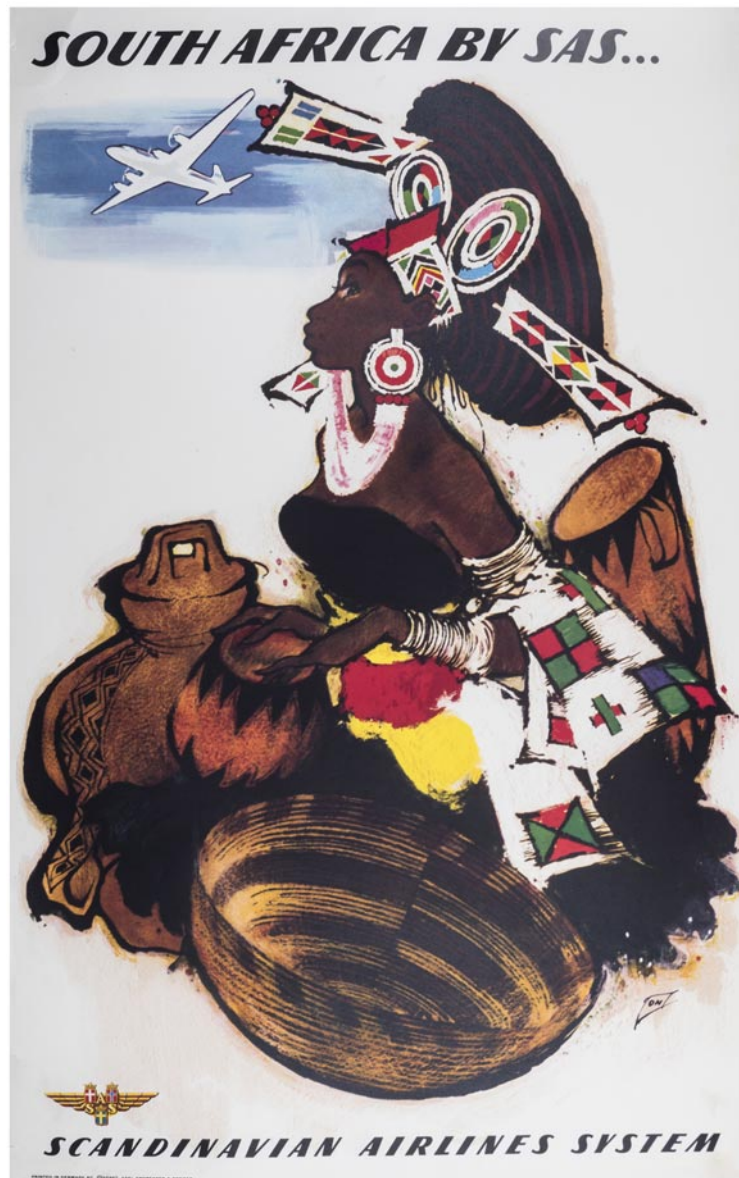


49. ANON. South Africa - Cool Healthy Holidays. Original lithograph with colour, linen backed, printed in in Holland by Rotogravure, Leiden, published by South African Tourist Corporation, c.1950. 1010 x 615 mm.

View of South Beach, Durban, South Africa.

Some wear and tape stains with small loss of paper to lower right corner.

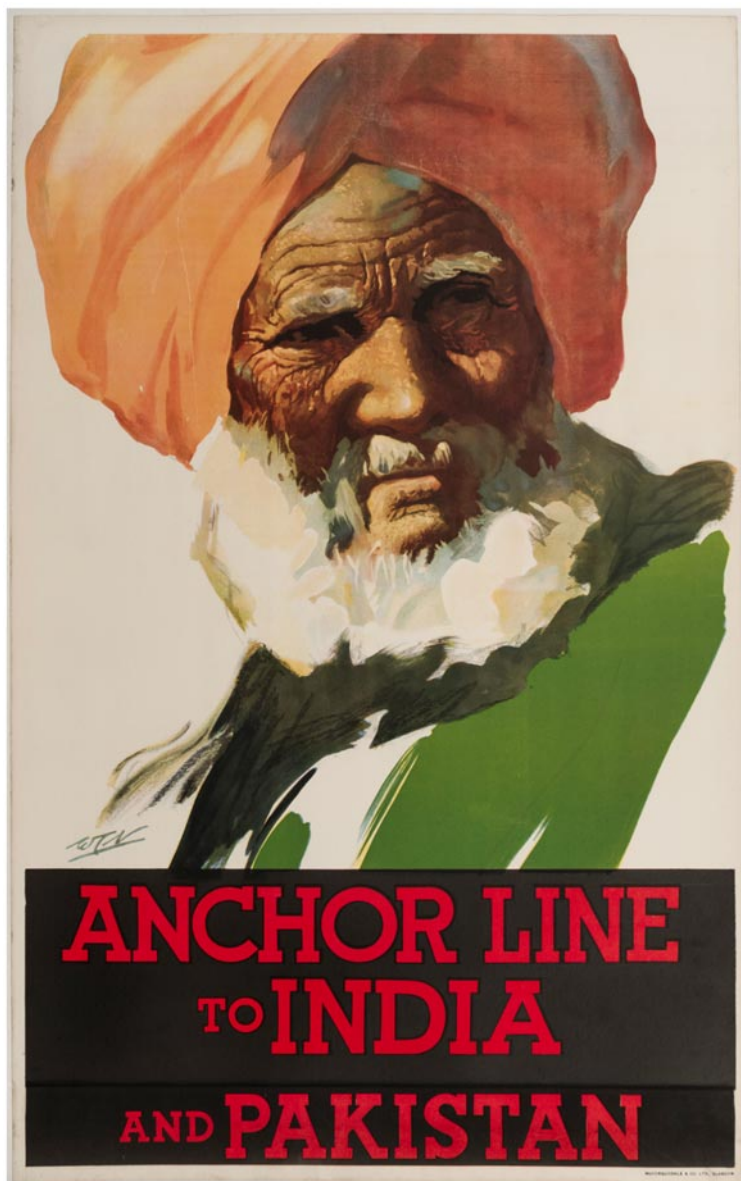
£365



50. NIELSEN, Otto (1916-2000). South Africa by SAS... Original lithograph with colour, printed in Denmark by affset Axel Andreasen & Sonner, c.1950. 1000 x 620 mm. £825



51. NIELSEN, Otto (1916-2000). Africa, SAS. Original off-set lithograph, linen backed, published by SAS, printed by Axel Andreasen & Sonner, Copenhagen, Denmark, c.1960. 995 x 630 mm. £750

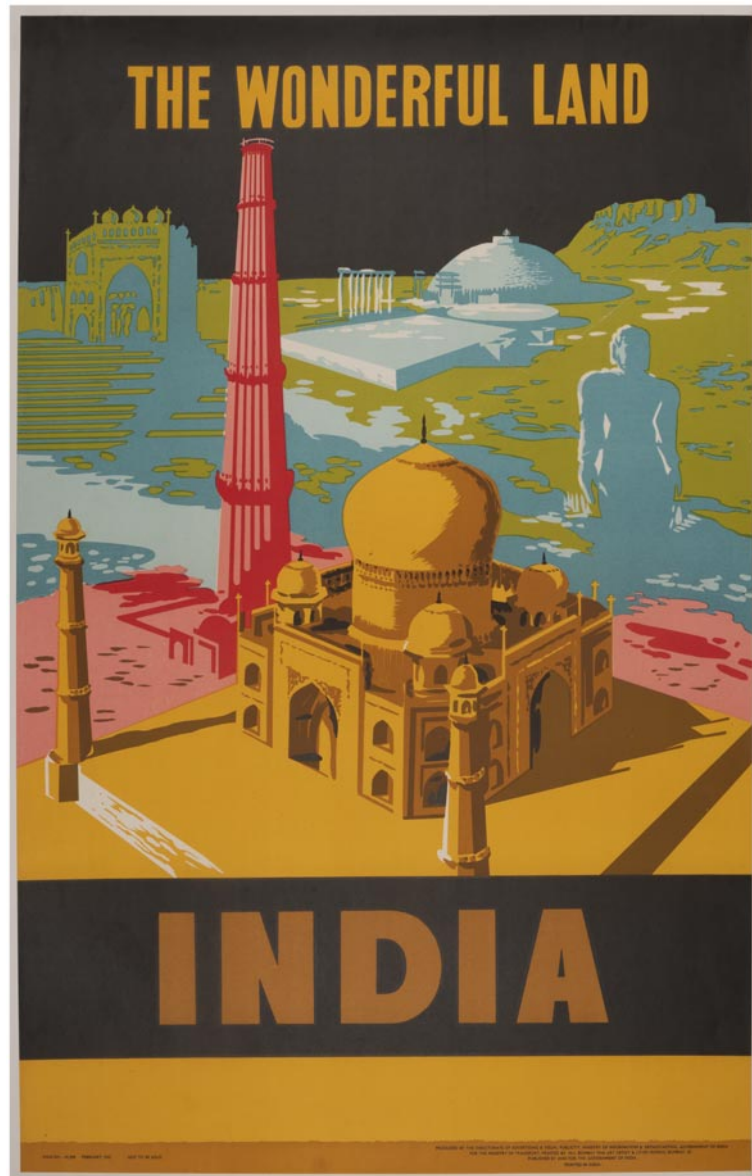


52. WTN. Anchor Line to India and Pakistan. Original lithograph with colour, linen backed, printed by McCorquodale & Co. Ltd., Glasgow, c.1935. 1015 x 635 mm.

Pakistan text has been added post Partition in 1947.

Some minor tears to corners contained during linen backing.

£1,750



53. ANON. The Wonderful Land India. Original lithograph with colour, linen backed, printed by Bombay fine art offset & litho, published by The Government of India, 1957. 990 x 620 mm. £850



54. GALLI, Stan. New England, United Airlines. Original lithograph with colour, printed in U.S.A., c.1960. 1020 x 635 mm. £250



55. BRENET, Albert (1903-2005). New York par la Transat. Original lithograph with colour, published by Compagnie Generale Transatlantique, c.1950. 580 x 370 mm. £450



56. ANON. Metropolis. Modern printing after the original, printed in France on very high quality Hahnemuhle 100% cotton paper. Superior quality ink as used on lithographic press, 2022. 1000 x 700 mm.

Metropolis is a 1927 German expressionist science-fiction drama film directed by Fritz Lang and written by Thea von Harbou in collaboration with Lang from von Harbou's 1925 novel of the same name.

Metropolis is now widely regarded as one of the greatest and most influential films ever made, ranking 35th in Sight & Sound's 2012 critics' poll. In 2001, the film was inscribed on UNESCO's Memory of the World Register, the first film to have this honour.

£275



57. NEWBOULD, Frank (1887-1951). Reaping Sugar-Canes in the West Indies. Original lithograph, with colour, linen backed, published by the Empire Marketing Board, printed for H.M. Stationery Office by Waterlow and Sons Ltd., London, Dunstable and Watford, c.1930. 505 x 760 mm.

Frank Parkinson Newbould was an English poster artist, known for his travel posters and Second World War posters for the War Office as assistant to Abram Games.

His clients included the Empire Marketing Board; London Transport and its predecessors; the London & North Eastern, Great Western and London, Midland and Scottish Railways, and the Orient and Cunard Lines.

Some minor tears which have been restored during linen backing.

£2,150



58. AINSWORTH, Edgar. The Market Garden of the Tropics-Malayan Pineapples. Original lithograph, with colour, linen backed, issued by the Empire Marketing Board, printed for H.M. Stationery Office by Waterlow and Sons Ltd., London, Dunstable and Watford, 1931. 505 x 765 mm. £1,650



59. TROMPF, Percival Albert (Percy) (1902-1964). Australia in the sun. Original lithograph with colour, linen backed, printed by Troedel & Cooper, Melbourne, published by Australian National Travel Association, c.1930. 1020 x 630 mm.

A large vertical tear at top repaired, extensive replaced losses in margins; repaired tears, creases and restoration in margins. £2,750

Vintage Luggage Labels



60. ANON. Hotel Pensione Terminus, Roma. Original Hotel luggage label, c.1910. 125 x 175 mm.

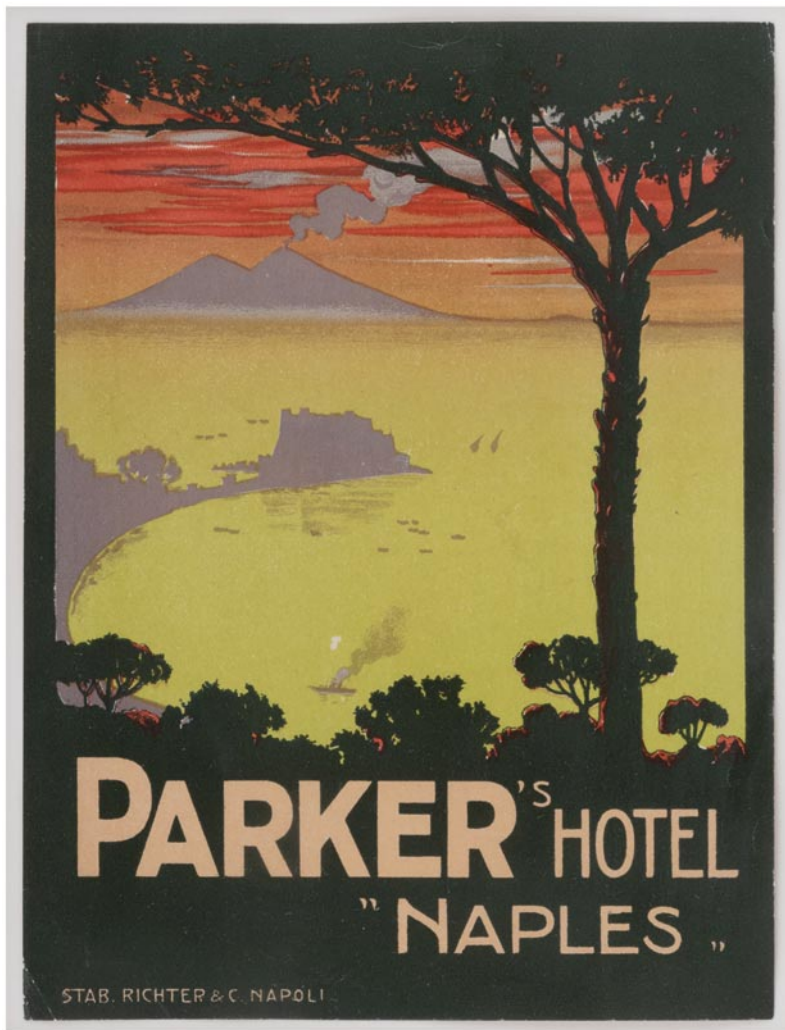
The Hotel opened in the late Nineteenth Century. The Porticos around the Piazza were designed by Architect Gaetano Koch. It was named Hotel Terminus due to its location not far from Rome's main railway station. The label shows the Hotel located at Piazza Repubblica.

The fountain seen in the photograph is the fountain of the Naiads in the centre of the square. The Hotel is suspended over the ruins of the baths of Diocletian (300 B.C.) which are visible beneath a glass floor on the lower level of the Hotel.

The Hotel today is called the Palazzo Naiadi.

Rare.

£195



61. ANON. Parker's Hotel, Naples. Original Hotel luggage label, c.1910. 150 x 115 mm.

The Hotel known then as the Tramontano opened on the Corso Vittorio Emanuele in 1870.

George Parker a marine biologist came to own the Hotel by settling the previous owners gambling debts. From then on the Hotel became known as Hotel Parkers and appeared with this name in the famous Baedekers guidebooks.

Printers: Stab. Richter and C. Napoli.

Rare.

£195



62. ANON. Casino Palace Hotel, Port Said. Original Hotel luggage label, c.1921. 100 x 140 mm.

Port Said was chosen by Ferdinand de Lesseps as the starting point for building the Suez canal. The canal opened in 1869.

The Hotel opened in 1907 and catered largely to those who had business relating to the canal or those wishing to break their journey on the way to the far east.

Printers: Richter and C. Napoli.

Very Rare.

£285



63. ANON. Nice, Hotel D'Angleterre et de la Grande Bretagne. Original Hotel luggage label, c.1923. 145 x 105 mm.

The Hotel is located at the Junction of Boulevard Victor Hugo and Rue Guiglia by the Jardin Alsace Lorraine.

The original Hotel opened in 1837 and then in 1856 was renamed the Hotel D'Angleterre. In 1914 it merged with the neighbouring Hotel called the Hotel de Grande Bretagne.

It was then called the Hotel D'Angleterre et de La Grande Bretagne.

The Hotel underwent major renovations to the façade and internal decoration. In 1980 it became the Park Hotel.

Printers. Imp Gandini, Nice.

Fine condition. Very rare.

£425



64. ANON. Compagnie Internationale des Wagon Lits Simplon Orient Express. Original Hotel luggage label, c.1925. 100 x 140 mm.

In 1919 the opening of the Simplon Tunnel allowed the introduction of a more Southerly route for the train via Paris - Milan - Venice - Trieste and Belgrade to Constantinople.

This service ran in addition to continuing services on the original route via Paris - Vienna and Budapest.

During the 1930's the train acquired its reputation for comfort and luxury. The Simplon-Orient Express services incorporated sleeping cars which ran from Calais.

Very Rare.

£525



65. ANON. Hotel Rond-Point, Paris. Original Hotel luggage label, c.1925. 120 x 150 mm.

The Hotel located a short distance from the Champs-Élysées has belonged to the Vuitton family since the end of the Nineteenth Century. In 1922 however with the advent of Art Deco they decided to change the look of the Hotel. A new marble façade and glass canopy were added to the exterior and Art Deco interiors were introduced.

L'Exposition Internationale des Arts Decoratifs et Industriels Modernes 1925 Paris.

A label like this one was exhibited in the tourism pavilion at the exhibition between April and October 1925. The layout of the exhibition covered 72 acres and the main entrance was at Place de La Concorde. Two thirds of exhibits were French.

Printers: P.H. Rosen, Paris.

Very Rare.

£265



66. ANON. Suvretta House Hotel, St. Moritz. Original Hotel luggage label, c.1927. 110 x 130 mm.

The Hotel opened in 1912. It was built on the Chasellas Plateau near St. Moritz. It was a luxurious Hotel with an international clientele including Eva Peron, King Farouk and the Shah of Persia.

This is a very rare label in fine condition.

£365



67. ANON. Morosani's, Post & Sport Hotel, Davos. Original hotel luggage label, c.1936. 135 x 100 mm.

The Hotel opened in 1906 and was originally known as Hotel Zur Post. The Hotel is located directly in the heart of Davos and is close to the ski slopes and ski terraces. It has always attracted visitors interested in Winter Sports.

It is interesting to note that this label features a stylised Bugatti Atlantic car which was launched in 1936, the year in which this label was obtained.

Rare.

£185



68. MULLER, Johann (1885-1958). Champex, Grand Hotel des Alpes & Hotel du Lac. Original Hotel luggage label, c.1912. 115 x 155 mm.

The Hotel was built by Felicien and Delphine Meilland and opened in 1907 in Champex which already had nine Hotels with more than 500 beds.

At the request of the clientele a Chapel was built in 1910 and official worship for the Champex resort was held here until 1941 when a Parish Chapel was built.

Winter tourist activity developed during the 1950's with the building of La Brea Chairlift in 1952.

The building has now been transformed into Holiday apartments.

Printers: A. Trub and Cie, Lausanne and Arrau.

Rare.

£235



69. PASCHAL, J. Grand Hotel, Venice. Original Hotel luggage label, c.1925. 150 x 110 mm.

The Hotel is housed in a Seventeenth Century building on the Grand Canal.

The first Iriditto Publico was held here where traders, travellers and nobility indulged in pleasure, gambling and intrigue.

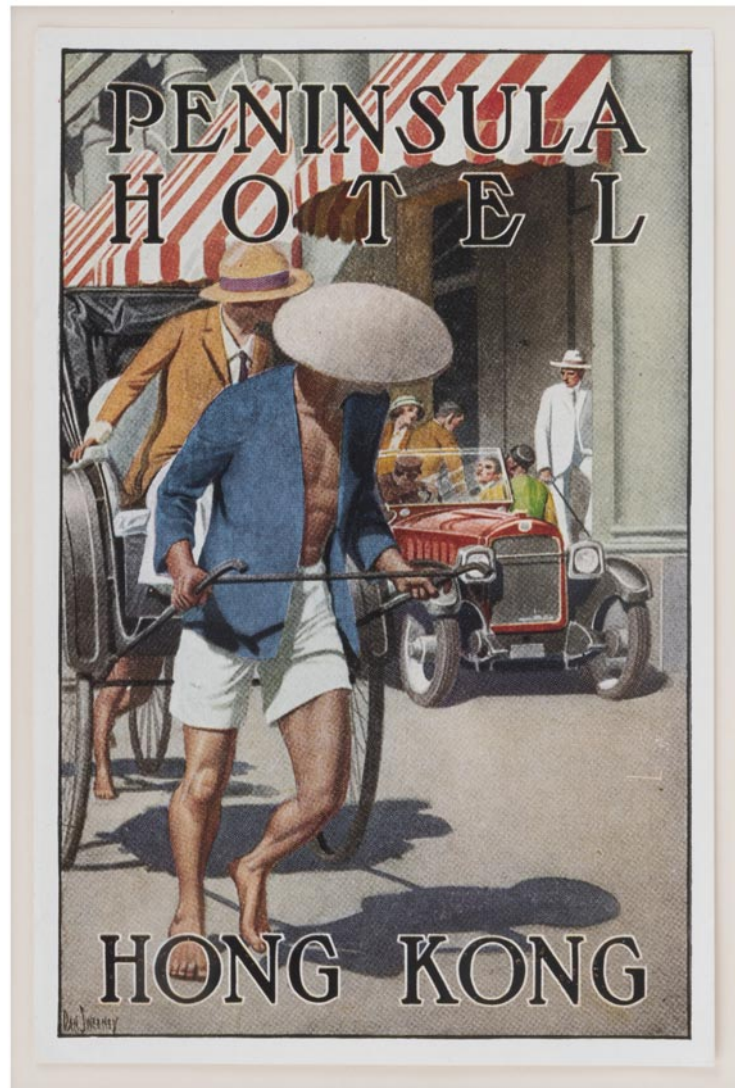
Today it is the Monaco and Grand Canal Hotel.

Printer: Richter & C. Napoli.

Signed: J. Paschal [Monogram].

Rare.

£165



70. SWEENEY, Dan (1880-1958). Peninsula Hotel, Hong Kong. Original Hotel luggage label, c.1928. 150 x 95 mm.

The Hotel was founded by members of the Kadoorie family who opened the Hotel in 1928. It is located in Tsim Sha Tsui, Kowloon, Hong Kong, at the junction of Nathan Road and Salisbury Road, directly opposite the Quays where ocean liner passengers disembarked.

It quickly became a place to spot celebrities during the 1930's, such as Charlie Chaplin and Paulette Goddard.

On 25th December 1941 the Governor of Hong Kong Sir Mark Young signed the Act of Surrender to the Japanese at the Hotel. The Hotel today is part of the Hong Kong and Shanghai Hotels group, headed by Sir Michael Kadoorie and is the flagship property of the Peninsular Hotels Group.

Very Rare and in Fine condition.

£405



71. ANTON, Ottamar (1895-1976). Luftschiffbau Zeppelin, Hamburg - Amerika Linie.

Original luggage label, c.1931. 110 x 110 mm.

LZ 127 Graf Zeppelin was a German passenger carrying hydrogen filled rigid airship that flew from 1928 to 1937. It was named after the German airship pioneer Ferdinand Von Zeppelin and was conceived and operated by Dr. Hugo Eckner the chairman of Luftschiffbau Zeppelin.

This is a very rare label in fine condition.

£565



72. ANON. Laurie's Great Northern Hotel, Agra. Original Hotel luggage label, c.1921. 105 x 150 mm.

The Hotel was constructed in the 1850's and built in the Grand Colonial style. Laurie's was the equivalent of the Imperial Hotel in Delhi. At the turn of the Century Laurie's played host to Royalty and heads of State.

From the Hotel the Taj Mahal was easily accessible.

Rare.

£235



73. ANON. Continental Hotel & des Bains, Saint-Raphael. Original Hotel luggage label, c.1912. 105 x 145 mm.

The Hotel opened in the early 1900's as demand was growing on the Cote D'Azur for luxury accomodation during the Winter season.

The Hotel located opposite the beach soon attracted the wealthy elite. It became famous for its fine cuisne which was offered in its two large dining rooms arranged in a rotunda. The Hotel was demolished in the 1970's and a new building was erected still called the Continental. The Hotel however now only occupies the first floor in this prestigious building.

Printers: Imp. Imbert and Cie. Grasse.

Very Rare.

£350